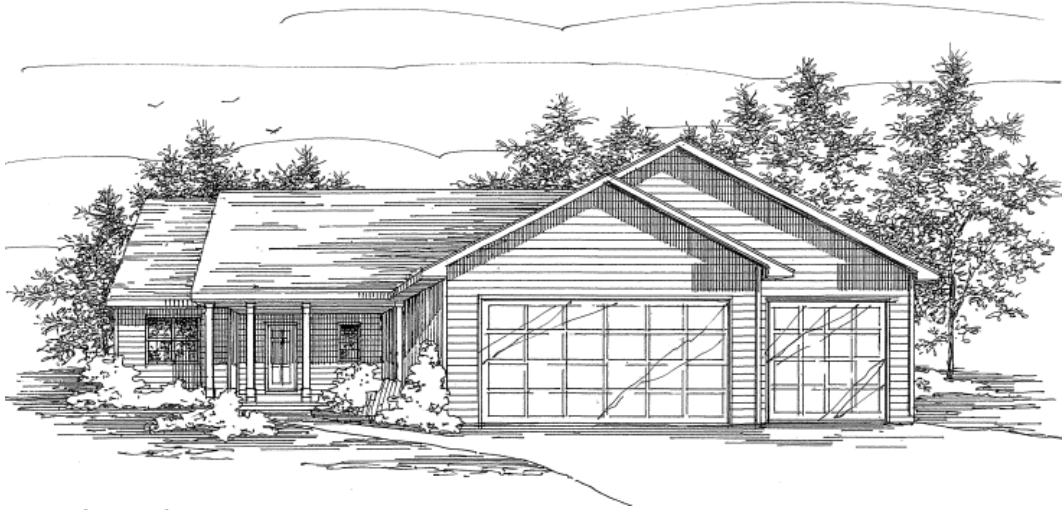


# Midwest Design Homes Inc.

Marty Wyngard ■ (920) 759-9000

marty@midwestdesignhomes.com ■ www.midwestdesignhomes.com



Copyright © Midwest Design Homes Inc.

## ■ Home Facts

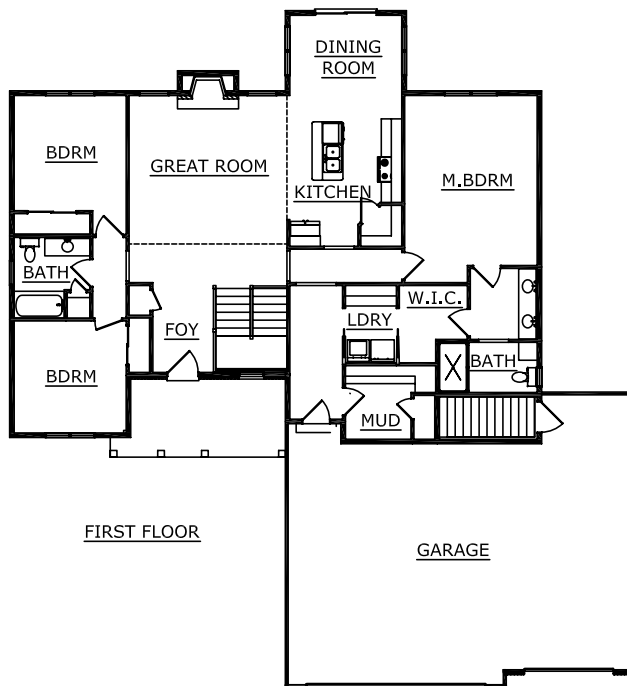
Style: ranch  
Total Square Footage: 1,809  
Bedrooms: 3  
Bathrooms: 2  
For Sale

## ■ Highlights

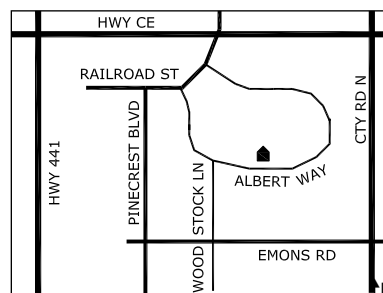
Winning the *Post Crescent's Best of the Valley Residential Builder* award in 2008 and 2009 is easy to understand as soon as you enter a Midwest Design Homes house.

This is a great home for a young family or someone looking to downsize. An energy-efficient home with all the amenities and superb craftsmanship make this a warm and inviting place to call home.

- Split-bedroom concept
- Beautiful open foyer
- Gourmet kitchen with granite countertops
- Stone and cedar shake siding
- Stone fireplace
- Lifetime Dry Basement Guarantee
- Two-year builder warranty
- Fully decorated by our professional design team
- This house was built using green building techniques
- Wisconsin ENERGY STAR® Home



334 Albert Way, Kimberly



From Hwy. 441, exit east on  
Cty. CE – south on Railroad St.  
– east to Albert Way